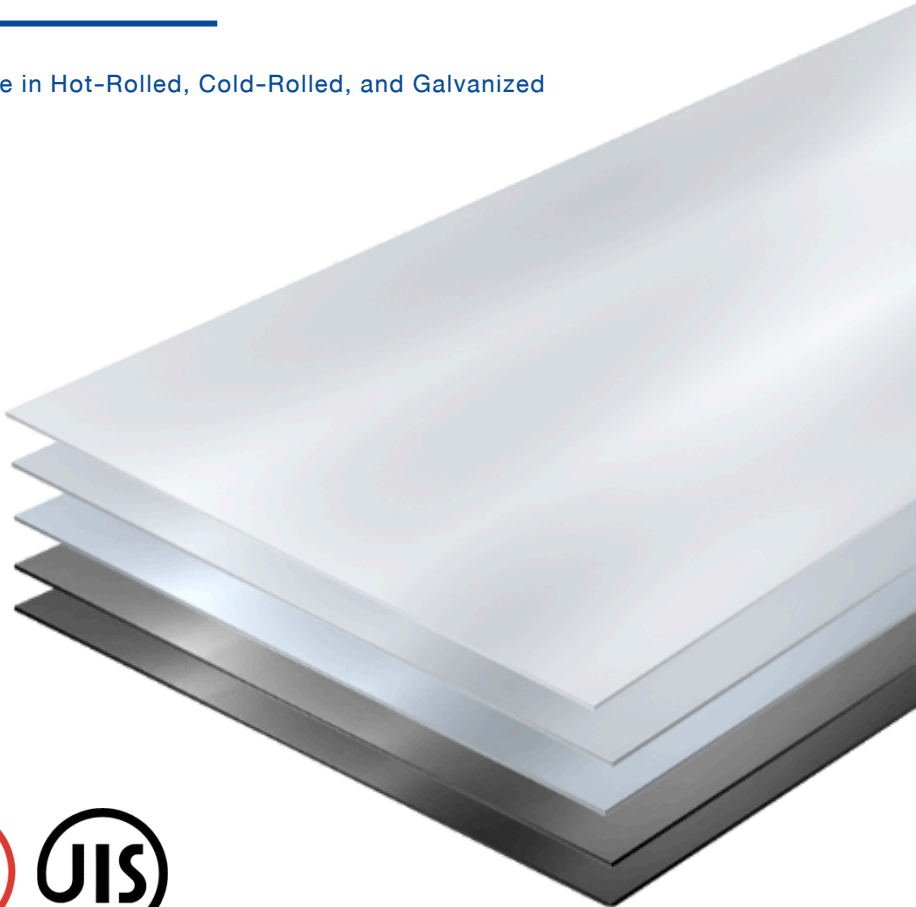




STEEL SHEET

- Available in Hot-Rolled, Cold-Rolled, and Galvanized

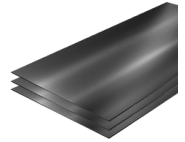
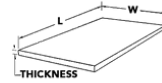




HOT-ROLLED STEEL SHEET



TIS 1479-2558



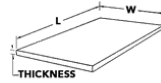
Thickness	Width X Length					
	4' x 8' 1219 mm. x 2438 mm.			5' x 10' 1524 mm. x 3048 mm.		
	Calculated Weight					
mm.	kg./pc.	lb./pc.	pcs./mt.	kg./pc.	lb./pc.	pcs./mt.
1.20	27.996	61.719	35.70	43.757	96.467	22.90
1.40	32.661	72.005	30.60	51.050	112.545	19.60
1.50	34.994	77.149	28.60	54.697	120.584	18.30
1.60	37.237	82.292	26.80	58.343	128.623	17.10
1.80	41.993	92.578	23.80	65.636	144.701	15.20
1.90	44.326	97.722	22.60	69.282	152.740	14.40
2.00	46.659	102.865	21.40	72.929	160.799	13.70
2.20	51.325	113.151	19.50	80.222	176.857	12.50
2.30	53.658	118.295	18.60	83.868	184.896	11.90
2.50	58.324	128.581	17.10	91.161	200.974	11.00
2.80	65.323	144.011	15.30	102.100	225.091	9.80
2.90	67.656	149.154	14.80	105.747	233.130	9.50
3.00	69.989	154.297	14.30	109.393	241.169	9.10
3.20	74.566	164.584	13.40	116.686	257.246	8.60
3.80	88.652	195.443	11.30	138.656	305.480	7.20
4.00	93.318	205.730	10.70	145.858	321.558	6.90
4.30	100.317	221.159	10.00	156.797	345.675	6.40
4.50	104.983	231.446	9.50	164.090	361.753	6.10
5.00	116.648	257.162	8.60	182.322	401.948	5.50
5.80	135.312	298.308	7.40	211.494	466.259	4.70
6.00	139.978	308.594	7.10	218.787	482.337	4.60
7.50	174.972	385.743	5.70	273.483	602.921	3.70
8.00	186.637	411.459	5.40	291.716	643.116	3.40
9.00	209.966	462.892	4.80	328.180	723.506	3.00
10.00	233.296	514.324	4.30	364.644	803.895	2.00
11.00	256.625	565.756	3.90	401.109	884.285	2.50
12.00	279.955	617.189	3.60	437.573	964.674	2.30
13.00	303.285	668.621	3.30	474.038	1,045.064	2.10



COLD-ROLLED STEEL SHEET



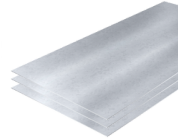
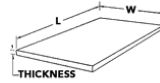
TIS 2012-2558



Thickness	Width X Length			
	4' x 8'			
	1219 mm. x 2438 mm.			
Calculated Weight				
mm.	kg./pc.	lb./pc.	pcs./mt.	
0.30	6.999	15.430	142.90	
0.36	8.399	18.561	119.10	
0.40	9.332	20.573	107.20	
0.45	10.498	23.145	95.30	
0.50	11.665	25.716	85.70	
0.55	15.831	28.288	77.90	
0.60	13.998	30.859	71.40	
0.65	15.164	33.431	65.90	
0.70	16.331	36.003	61.20	
0.80	18.664	41.146	53.60	
0.85	19.830	43.718	50.40	
0.90	20.997	46.289	47.60	
1.00	23.330	51.432	42.90	
1.10	25.663	56.576	39.00	
1.20	27.996	61.179	35.70	
1.40	27.996	72.005	30.60	
1.45	33.828	74.577	29.60	
1.50	34.994	77.149	28.60	
1.55	36.161	79.722	27.70	
1.60	37.327	82.292	26.80	
1.80	41.993	92.578	23.80	
1.90	44.326	97.722	22.60	
2.00	46.659	102.865	21.40	
2.20	51.325	113.151	19.50	
2.30	53.658	118.295	18.60	
2.50	58.324	128.581	17.10	
2.60	60.657	133.724	16.50	
2.80	65.323	144.011	15.30	
2.90	67.656	149.154	14.80	
3.00	69.989	152.297	14.30	



GALVANIZED STEEL SHEET



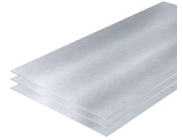
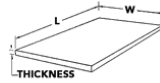
Thickness	Width X Length		
	Z18 4' x 8' 1219 mm x 2438 mm		
	Calculated Weight		
mm.	kg./pc.	lb./pc.	pcs./mt.
0.30	7.724	17.028	129.50
0.36	9.124	20.114	109.60
0.40	10.057	22.172	99.40
0.45	11.223	24.743	89.10
0.50	12.390	27.315	80.70
0.55	13.556	29.886	73.80
0.60	14.723	32.458	67.90
0.65	15.889	35.030	62.90
0.70	17.056	37.601	58.60
0.80	18.222	40.173	54.90
0.85	19.389	42.754	51.60
0.90	20.555	45.316	48.60
1.00	21.722	47.888	46.00
1.10	24.055	53.031	41.60
1.20	26.388	58.174	37.90
1.30	28.721	63.318	34.80
1.40	33.387	73.604	30.00
1.45	34.553	76.176	28.90
1.50	35.720	78.747	28.00
1.55	36.886	81.319	27.10
1.60	38.052	83.891	26.30
1.80	42.718	94.177	23.40
1.90	45.051	99.320	22.20
2.00	47.384	104.463	21.10
2.20	52.050	114.750	19.20
2.30	54.383	119.893	18.40
2.50	59.049	130.180	16.90
2.60	61.382	135.323	16.30
2.80	66.048	145.609	15.10
2.90	68.381	150.753	14.60
3.00	70.714	155.896	14.10



GALVANIZED STEEL SHEET



TIS 50-2561



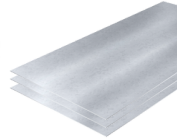
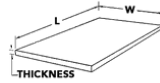
Thickness	Width X Length		
	Z22 4' x 8' 1219 mm x 2438 mm		
	Calculated Weight		
mm.	kg./pc.	lb./pc.	pcs./mt.
0.30	7.905	17.428	126.50
0.36	9.305	20.514	107.50
0.40	10.238	22.571	97.70
0.45	11.405	25.143	87.70
0.50	12.571	27.715	79.50
0.55	13.738	30.286	72.80
0.60	14.904	32.858	67.10
0.65	16.071	35.429	62.20
0.70	17.237	38.001	58.00
0.80	18.404	40.573	54.30
0.85	19.570	43.144	51.10
0.90	20.737	45.716	48.20
1.00	21.903	48.287	45.70
1.10	24.236	53.431	41.30
1.20	26.569	58.574	37.60
1.30	28.902	63.717	34.60
1.40	33.586	74.004	30.00
1.45	34.734	76.575	28.90
1.50	35.901	79.147	28.00
1.55	37.067	81.719	27.10
1.60	38.234	84.290	26.30
1.80	42.900	94.577	23.40
1.90	45.233	99.720	22.20
2.00	47.566	104.863	21.10
2.20	52.232	115.150	19.20
2.30	54.564	120.293	18.40
2.50	59.230	130.579	16.90
2.60	61.563	135.723	16.30
2.80	66.229	146.009	15.10
2.90	68.562	151.152	14.60



GALVANIZED STEEL SHEET



TIS 50-2561



Thickness	Width X Length		
	Z27 4' x 8' 1219 mm x 2438 mm		
	Calculated Weight		
mm.	kg./pc.	lb./pc.	pcs./mt.
0.30	8.131	17.926	123.0
0.36	9.531	21.012	107.6
0.40	10.464	23.069	95.6
0.45	11.631	25.641	86.0
0.50	12.797	28.212	78.1
0.55	13.964	30.784	41.6
0.60	15.130	33.356	66.1
0.65	16.297	35.927	61.4
0.70	17.463	38.499	57.3
0.80	18.629	41.071	53.7
0.85	19.796	43.642	50.5
0.90	20.962	46.214	47.7
1.00	22.129	48.785	45.2
1.10	24.462	53.929	40.9
1.20	26.792	59.072	37.3
1.30	29.128	64.215	34.3
1.40	33.794	74.502	29.6
1.45	34.960	77.073	28.6
1.50	36.127	79.645	27.7
1.55	37.293	82.217	26.8
1.60	38.460	84.788	26.0
1.80	43.126	95.075	23.2
1.90	45.459	100.21	22.0
2.00	47.791	105.361	20.9
2.20	52.457	115.648	19.1
2.30	54.790	120.791	18.3
2.50	59.456	131.077	16.8
2.60	61.789	136.221	16.2
2.80	66.455	146.507	15.0
2.90	68.788	151.650	14.5
3.00	71.121	156.794	14.1



CONTACT US

Email : salescenter@cotcometalwork.co.th

Website : www.cotcometalworks.co.th

Facebook : Cotco Metal Works

Youtube : Cotco Metal Works

Instagram : Cotco Metal Works

Tiktok : Cotco Metal Works

สำนักงานขาย

ที่อยู่ : 216/37 ชั้น11 ตึก L.P.N. , ถนนนางลิ้นจี่, เขตยานนาวา, กรุงเทพฯ 10120

โทร : 02-285-2700

สำนักงานใหญ่และโรงงานศูนย์ทุ่งครุ กรุงเทพฯ (PLANT 1)

ที่อยู่ : 652 ถ.ประชาอุทิศ แขวงทุ่งครุ เขตทุ่งครุ กรุงเทพมหานคร 10140

โทร : 02-463-0221

โรงงานศูนย์ระยอง (PLANT 2)

ที่อยู่ : 189 ซ.6 นิคมสร้างตนเอง ถ.ทางหลวงหมายเลข36 ม.6 ต.มะขามคู่
อ.นิคมพัฒนา จ.ระยอง 21180

โทร : 03-860-6236



ID : @cotcometalworks