



# SPIRAL PIPE (SAW)

- Available in various types, including bare (black carbon steel), hot-dip galvanized, tape-wrapped, coal tar coated, PU coated, and PU coated with bell end (special end).



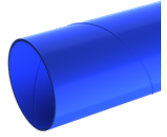
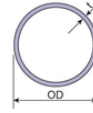
TIS 427-2562



# SPIRAL PIPE (SAW)



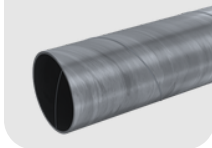
TIS 427-2562



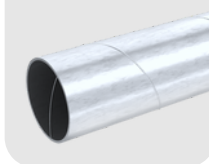
## Applicable Standards for Spiral Pipe Manufacturing and Coating

| Standards  | Products   | Product Capacity       |                      |
|------------|--|------------------------|----------------------|
|            |  | Outside Diameter (mm.) | Wall Thickness (mm.) |
| AWWA C 200 | • Steel Water Pipes 6 inches and Larger  | 200 - 3000             | 4.50 - 19.10         |
| AWWA C 210 | • Liquid Epoxy Coating for Steel Water Pipe  | 200 - 3000             | 4.50 - 19.10         |
| AWWA C 222 | • Polyurethane Coatings for the Interior and Exterior of Steel Water Pipe and Fittings       | 200 - 3000             | 4.50 - 19.10         |
| AWWA C 217 | • Microcrystalline Wax and Petrolatum Tape Coating Systems for Steel Water Pipe and Fittings | 200 - 3000             | 4.50 - 19.10         |
| AWWA C 205 | • Cement Mortar Protective Lining and Coating for Steel Water Pipe                           | 200 - 3000             | 4.50 - 19.10         |
| AWWA C 215 | • Extruded Polyolefin Coatings for Steel Water Pipe  | 200 - 3000             | 4.50 - 19.10         |
| JIS G 3443 | • Coating Steel Pipe for Water Pipe  | 200 - 3000             | 4.50 - 19.10         |
| JIS G 3444 | • Carbon Steel Tubes for General Structural Purposes   | 200 - 3000             | 4.50 - 19.10         |
| JIS G 3457 | • Submerged Arc Welded Carbon Steel Pipes  | 200 - 3000             | 4.50 - 19.10         |
| JIS G 3492 | • Coal Tar Enamel Protective Coating for Steel Water Pipes                                   | 200 - 3000             | 4.50 - 19.10         |
| JIS A 5525 | • Steel Pipe Piles   | 200 - 3000             | 4.50 - 19.10         |
| BS 534     | • Steel Pipes, Joints and Specials for Water and Sewage                                      | 200 - 3000             | 4.50 - 19.10         |
| ASTM A139  | • Electrical-Fusion Submerge Arc Welding Steel Pipe  | 200 - 3000             | 4.50 - 19.10         |
| ASTM A211  | • Submerge Arc Welding Steel or Iron Pipe  | 200 - 3000             | 4.50 - 19.10         |
| ASTM A252  | • Welded and Seamless Steel Pipe Piles   | 200 - 3000             | 4.50 - 19.10         |
| MWA, PWA   | • Steel Pipes and Fittings   | 200 - 2100             | 6.00 - 19.10         |
| TIS 427    | • Standard for Electrically Welded Steel Water Pipe  | 200 - 1500             | 6.00 - 12.70         |

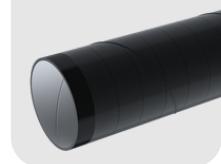
**Bare**  
(Black Carbon Steel / Uncoated)



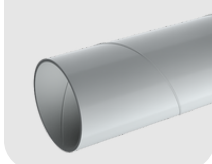
**Hot-Dip Galvanized**



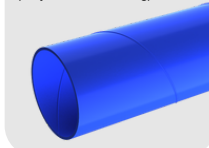
**Tape-Wrapped**



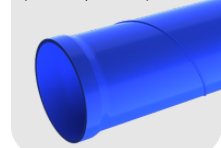
**Coal Tar Coated**



**PU Coated**  
(Polyurethane Coating)

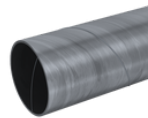
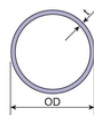


**PU Coated with Bell End**  
(PU with Special End)





TIS 427-2562



## Spiral Pipe Specifications (TIS Standard)

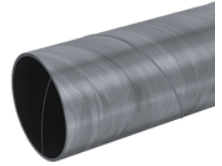
| Normal Diameter | OD<br>(mm.)  | Thickness                                 |                           | Cement-Mortar Lining<br>Thickness (mm.) |
|-----------------|--------------|---|---------------------------|---|
|                 |              | Underground Pipe and<br>Sleeve Pipe (mm.) | Aboveground Pipe<br>(mm.) |   |
| 200             | 219.1+/-1.6  | 4.50 - 0.25                               | 6.0 - 0.25                | 6+2,-1                                  |
| 250             | 273.0+/-1.6  | 4.80 - 0.25                               | 6.0 - 0.25                | 6+2,-1                                  |
| 300             | 323.9+/-1.6  | 6.00 - 0.25                               | 6.0 - 0.25                | 6+2,-1                                  |
| 400             | 406.4+/-1.6  | 6.00 - 0.25                               | 7.9 - 0.25                | 8+3,-2                                  |
| 500             | 508.0+/-1.6  | 6.00 - 0.25                               | 7.9 - 0.25                | 8+3,-2                                  |
| 600             | 609.6+/-1.6  | 6.00 - 0.25                               | 11.1 - 0.25               | 8+3,-2                                  |
| 700             | 711.2+/-1.6  | 6.00 - 0.25                               | 11.1 - 0.25               | 10+3,-2                                 |
| 800             | 812.8+/-1.6  | 7.90 - 0.25                               | 12.7 - 0.25               | 10+3,-2                                 |
| 900             | 914.4+/-1.6  | 7.90 - 0.25                               | 12.7 - 0.25               | 10+3,-2                                 |
| 1000            | 1016.0+/-1.6 | 9.50 - 0.25                               | 12.7 - 0.25               | 12+3,-2                                 |
| 1100            | 1117.6+/-1.6 | 9.50 - 0.25                               | -                         | -                                       |
| 1200            | 1219.2+/-1.6 | 11.10 - 0.25                              | 15.9 - 0.25               | 12+3,-2                                 |
| 1300            | 1320.8+/-1.6 | 12.70 - 0.25                              | -                         | -                                       |
| 1400            | 1422.4+/-1.6 | 12.70 - 0.25                              | -                         | -                                       |
| 1500            | 1524.0+/-1.6 | 12.70 - 0.25                              | 19.1 - 0.25               | 12+3,-2                                 |
| 1600            | 1625.6+/-1.6 | 15.90 - 0.25                              | 19.1 - 0.25               | -                                       |
| 1800            | 1820.0+/-1.6 | 15.90 - 0.25                              | 25.4 - 0.25               | 14+3,-2                                 |
| 2100            | 2120.0+/-1.6 | 19.10 - 0.25                              | -                         | -                                       |

## Tolerance on Outside Diameter and Wall Thickness

| Dimension             |         | Tolerances %                         |
|-----------------------|---------|--------------------------------------|
| Thickness             |         | + Non Limit<br>- 25mm                |
| Outside Diameter      |         | ± 0.5% (Length of the Circumference) |
| Deflection            |         | Under 3.2 mm per 3 m Length          |
| Length of Side        |         | + Non Limit<br>0                     |
| Height of Welded Pipe | Inside  | + 3 mm<br>0                          |
|                       | Outside | + 1.6<br>0                           |



# SPIRAL PIPE (SAW) REFERENCE PROJECTS



งานเสาทำเรือ กองเรือลำน้ำ กองเรือยุทธการ



งานสะพานข้ามแม่น้ำแม่น้ำเจ้าพระยา จ.อ่างทอง



งานโครงสร้างโรงงานขนาดใหญ่



งานท่อลำเลียง



งานระบบชลประทาน จ.อุทัยธานี



งานระบบท่อ งานทุเดจา



## CONTACT US

Email : [salescenter@cotcometalwork.co.th](mailto:salescenter@cotcometalwork.co.th)

Website : [www.cotcometalworks.co.th](http://www.cotcometalworks.co.th)

Facebook : Cotco Metal Works

Youtube : Cotco Metal Works

Instagram : Cotco Metal Works

Tiktok : Cotco Metal Works

---

### สำนักงานขาย

ที่อยู่ : 216/37 ชั้น11 ตึก L.P.N. , ถนนนางลิ้นจี่, เขตยานนาวา, กรุงเทพฯ 10120

โทร : 02-285-2700

---

### สำนักงานใหญ่และโรงงานศูนย์ทุ่งครุ กรุงเทพฯ ( PLANT 1 )

ที่อยู่ : 652 ถ.ประชาอุทิศ แขวงทุ่งครุ เขตทุ่งครุ กรุงเทพมหานคร 10140

โทร : 02-463-0221

---

### โรงงานศูนย์ระยอง ( PLANT 2 )

ที่อยู่ : 189 ซ.6 นิคมสร้างตนเอง ถ.ทางหลวงหมายเลข36 ม.6 ต.มะขามคู่  
อ.นิคมพัฒนา จ.ระยอง 21180

โทร : 03-860-6236



ID : @cotcometalworks